

MICHIGAN SOCIOLOGICAL ASSOCIATION

Bill Clift

1984 FALL CONFERENCE

KELLOGG CENTER

MICHIGAN STATE UNIVERSITY  
EAST LANSING, MICHIGAN

SATURDAY OCTOBER 27, 1984  
9 AM - 6 PM

## DOING SOCIOLOGY IN THE 80'S

KEYNOTE SPEAKER: Mayer Zald, Chairman  
Department of Sociology  
University of Michigan

## WELCOME TO MICHIGAN STATE UNIVERSITY!

The Department of Sociology at MSU is pleased to host this year's Fall Conference of the Michigan Sociological Association. We trust you will find your day here to be both informative and enjoyable.

The MSA board and program committee have prepared a full day of sessions for your interest and information. The theme of this conference is "Doing Sociology in the 80's", and the sessions will have direct utility for teaching Sociology and doing applied Sociology in a way that will promote standard sociological theory and methods while meeting current day challenges. Every presenter is a Michigan Sociologist. In this way it is hoped that you will learn what your Sociological colleagues are doing throughout the state, and see the variety and vitality of Michigan Sociology.

We are especially pleased that Mayer Zald, whose work in Social Movements is classic in the field, is here to provide our Keynote Address. Zald's address will focus on a dilemma within the field, the struggle between Sociology as a scientific discipline and Sociology as a humanist concern. This topic is timely and represents a necessary challenge within the field.

We trust you will find other sessions invigorating as well, be you concerned with issues like nuclear war and women's rights, the new field of the Sociology of Food, how to better teach basic sociology or how to use the computer in the classroom. We also have two sessions where sociologists in applied settings will discuss their work, as well as a Potpourri session of student papers. If you are interested in doing Sociology, there should be something here of interest for you. At the end of the day please fill out the enclosed evaluation and leave it in the box near the cash bar.

For lunch it was decided to allow the participants to network together by discipline at restaurants of their choice instead of having a formal luncheon. After the first session everyone should meet in the hallways outside the meeting rooms to organize. Undergraduate Sociology students at MSU will be guides to the local restaurants. The campus is lovely, and East Lansing has an air of comfortable excitement about it that we wanted you to experience while you are here. Enclosed you will find a map of some nearby restaurants, or you can eat in the State Room at the Kellogg Center.

You may wish to visit the Union, MSU Bookstore, Museum, or take a walk by the Red Cedar River. Directions can be easily obtained.

If you have any questions, please ask at the Registration Desk, any of the guides, or MSA board members. The guides will have ribbons on their name tags, as will the MSA board members. You may notice that some participants will have a star on their name tag; this star represents that they are a part of the Lansing Area Sociological Community. Lansing area sociologists will meet during the reception/cash bar after our short business meeting. Thank you all for your participation!!! Enjoy your day!

SOCIOLOGY IN THE 80'S  
Michigan Sociological Association  
Fall Conference

*Bill Whit*

Saturday, October 27, 1984

Kellogg Center  
Michigan State University  
East Lansing, Michigan

9:00 - 10:00 am

Registration, coffee

10:00 - 11:30 am

SESSION I

A. Nuclear Arms Race: How do you teach current issues?  
Richard Ball (Ferris State College)

~~Heritage~~ Room  
VISTA

B. Applied Sociology. Marvin Olsen (Michigan State)  
facilitator.

Presentors: -Martha Bibbs - Deputy Director for  
Merit Systems Administration, Michigan  
Department of Civil Service  
-Manfred Thuller - Assistant Dean of  
International Programs, Michigan State Univ  
-Tony Pido, Policy Analyst, Department of  
Labor, State of Michigan  
-Larry Schwartz, Social Psychologist,  
VA Hospital, Battle Creek

-Room 102

11:45 - 12:45 pm

LUNCH - Networking by speciality area.  
See guide to restaurants in East Lansing.

12:45 - 1:30 pm

Keynote speaker: Mayer Zeld - University of Michigan -  
"Sociology as Quasi-Science/Quasi-Humanities"  
-Room 104

1:45 - 3:00 pm

SESSION II

A. Approaches to Teaching Basic Sociology  
Round table - facilitator - Roger Nemeth (Hope)  
-Room 102

B. Sociology of Food and Nutrition  
Bill Whit, Chair

Presentors: -Yvonne Vissing (Michigan State Univ.)  
"Holistic Health Advocates  
Food and Nutrition Practices: Fad,  
Quackery or Social Change?"  
-Kate Villaire, "American Food Aid:  
What it Really is and How it can be Changed"  
-Tom Kestuzewa, "China's Food Policies"

-Room 104

*1st take  
Soc Food  
Session 15  
10-3-15*

*10-3-15*

*via Ken Duff  
Tom KOSTUZEW*

1:45 - 3:00 pm

- C. Potpourri-  
Don Williams (Grand Valley State College) Facilitator  
Presentors:  
-Carole Rankin (Michigan State Univ.)  
"Concept of Competence"  
-Mohammad Chaichian (Michigan State Univ.)  
Is Teaching Sociology Different from  
Teaching in Other Fields?"  
-Akbar Mahdi (Adrian)  
"Third World Women from Development to  
Underdevelopment"

-Heritage Room  
VISTA

3:15 - 4:30 pm

SESSION III

- A. Women's Circle - Women's relations with other women.  
Barrie Thorne (Michigan State Univ.) - Facilitator  
Presentors:  
-Jacquie Johnson (GVSC)  
-Linda Easley (Sienna Heights)  
-Marilyn Aranoff (MSU)  
-Virginia Powell (MSU)

-Heritage Room  
VISTA

- B. The Computer and the Classroom - Tom VanValey (WMU)  
-Room 102

- C. Applied Sociology III - Akbar Mahdi (Adrian) - Facilitator  
Presentors:  
-Preston Elrod- Kalamazoo County  
Juvenile Court, Restitution Program  
-Larry Rosen - Private Consultant  
-Steve Merson - Program Director  
National Studies for Trauma and Emergency  
Medical Systems, (University of Maryland)  
-Diane Emling, Office of Young Children  
Services, Lansing

-Room 104

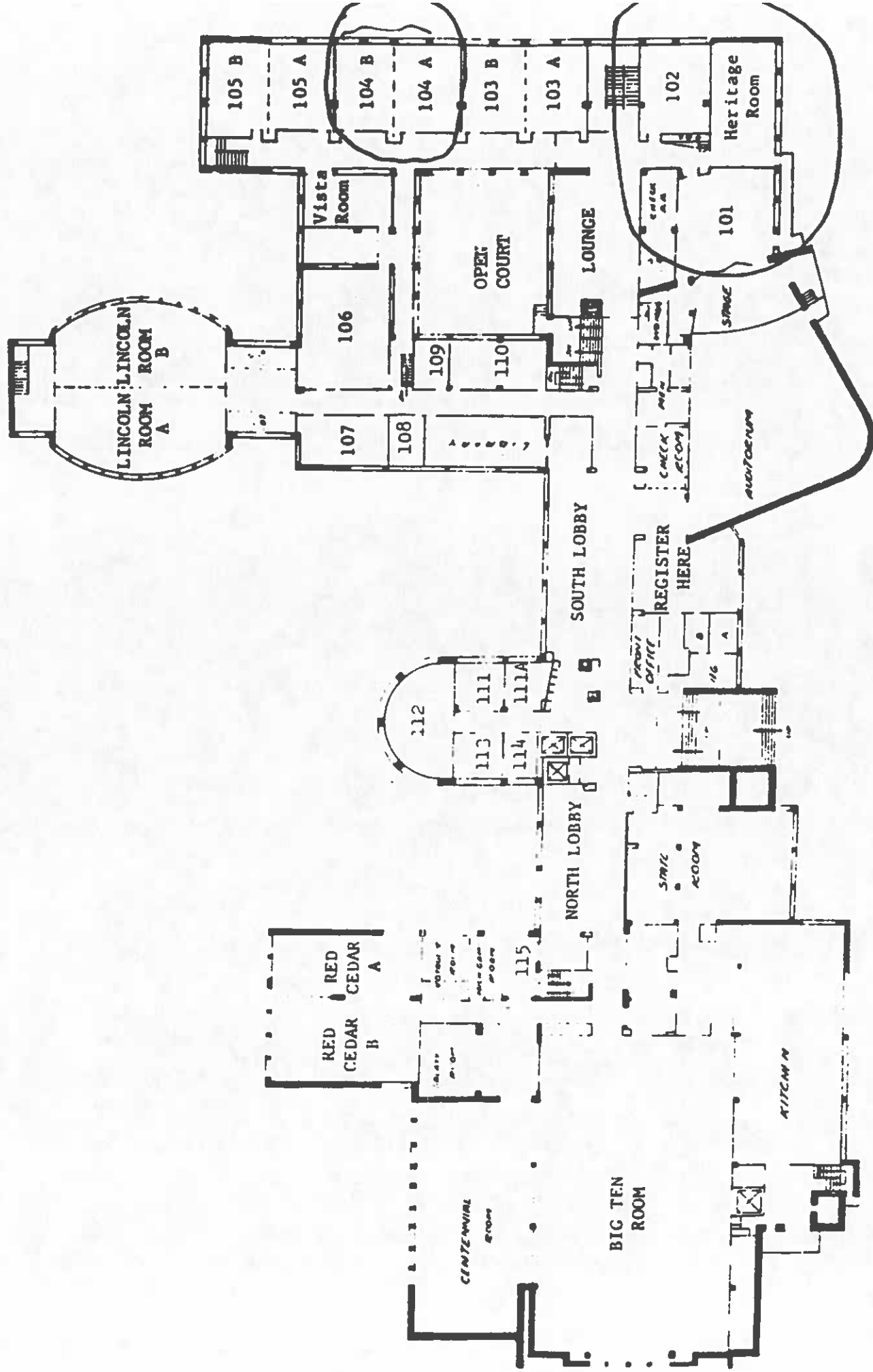
4:30 - 6:00

RECEPTION - Business Meeting  
Cash Bar

-Room 104

- Fin Bill* *whit - Spelling of Name*
1. *History Day - use - 11/20/2000*
  2. *My Grants in Field*
  3. *Doc. of Field - inherently in fee -*  
*Miscellaneous -*
  - 4.

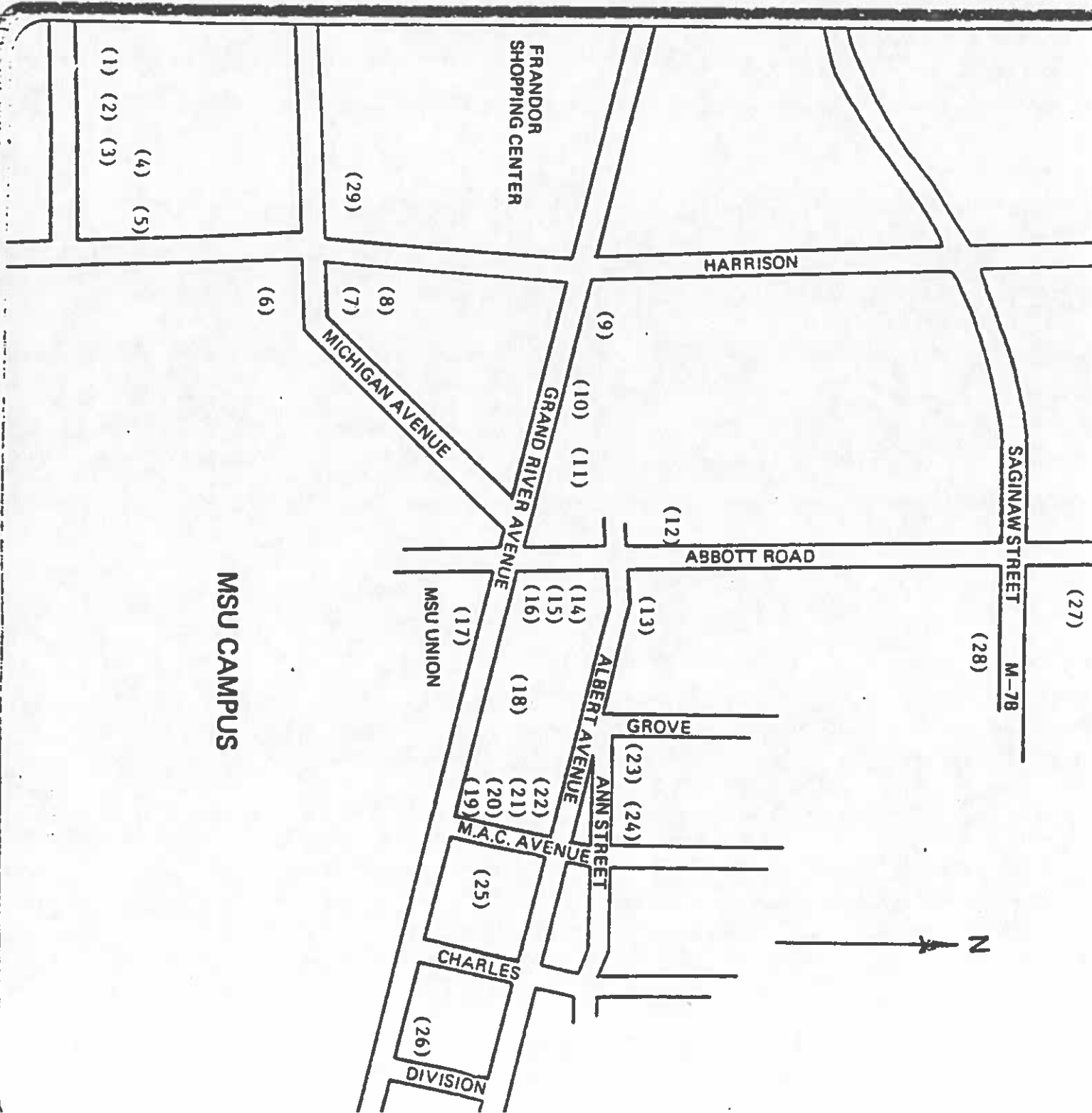
*Foot Nutrition*



11151 11001

A GUIDE TO  
RESTAURANTS IN  
EAST LANSING

1. Village Market E
2. Elias Brothers IF
3. Pretzel Bell MF
4. Wendy's IF
5. Hobie's M
6. Kellogg Center
7. Harrison Roadhouse
8. Sir Pizza IF
9. Arby's IF
10. Crunchy's M
11. McDonald's IF
12. Pantree M
13. Dooley's M
14. Rick's M
15. Beggar's Banquet
16. Robert's E
17. MSU Union M
18. Olga's M
19. El Azteco M
20. Olde World M
21. Bell's Pizza IF
22. Riviera Cafe M
23. Bilbo's Pizza MF
24. Small Planet M
25. America's Cup M
26. Jacobson's E. Room
27. Cork 'n Cleaver ME
28. Win Schuler's E
29. Silver Dollar MF
- I (Inexpensive)
- M (Moderate)
- E (Expensive)
- F (Family)



EAST LANSING AND OKEMOS

- M America's Cup, 220 M.A.C., across from M.S.U., Greek lunch, dinner, cocktails, 332-3567
- M Arby's, 270 W. Gd. River, 349-6340
- B Aeshi Japanese Steakhouse, steak and seafood, cocktails, 2157 W. Gd. River, 349-0820
- M Backstage Restaurant, lunch and dinner, cocktails, Meridian Mall, 349-3220
- MF BeBBat's Banquet, 218 Abbott, 351-4540
- IF Bell's Pizza, 225 M.A.C., 332-5027
- M Bennigan's, lunch and dinner, cocktails, 2058 W. Gd. River, 349-3221
- MF Bilbo's Pizza in a Pan, 213 Ann St., 332-6006
- MF Bill Knapp's, 2151 W. Gd. River, 349-3230
- M Buncha's Continental Cafe, 529 E. Gd. River, 332-7800
- MF Chi-Chi's Mexican Restaurant, 4880 Marsh Rd., Okemos, 349-6260
- IF Coral Gables, 2838 E. Gd. River, 337-1311, American and Italian, cocktails
- ME Cork 'n Cleaver, 1310 N. Abbott, 351-5327, lunch and dinner
- M Crunchy's, 254 W. Gd. River, 351-2506, Italian and cocktails
- MF Denny's, 2701 E. Gd. River, 351-0421, open 24 hours for all meals
- MF Dillon's, 3050 Lake Lansing Rd., 351-6326, cocktails
- M Dooley's Restaurant, 131 Albert, 351-9000, cocktails
- M El Azteco Restaurant, 203 M.A.C., 351-9111, Mexican
- IF Elias Brother's Big Boy, 1050 Trowbridge and Meridian Mall, 351-5132 and 349-0916
- ME Harrison Roadhouse, 720 E. Michigan Ave., 337-0200, cocktails, breakfast, lunch, and dinner, close to Kellogg
- M Robie's, 930 Trowbridge, 351-3800, sandwiches, soup, beer
- MF International House of Pancakes, 337-8097, 2800 E. Gd. River
- M Jacobson's East Room, 333 E. Gd. River, lunch and dinner
- IF McDonald's, 234 W. Gd. River, 332-4103
- MF Mr. Steak, 2287 W. Gd. River, 349-3758
- M Olde World, 211 M.A.C., 351-3533, sandwiches and soup
- M Olga's Kitchen, 131 E. Gd. River, 351-8872
- M Pantree, 327 Abbott, 351-0620, open 24 hours for all meals
- ME Platichio's for Fish, 2827 E. Gd. River, 351-1551, Italian and fresh fish
- MF Pretzel Ball, 1020 Trowbridge Rd., 351-0300, lunch and dinner
- M Ramon's, 2758 E. Gd. River, 351-1092, Mexican

LANSING

- MF Casa Nova, 3015 S. Logan, 882-6697 Italian and American, lunch and dinner
- M Clara's, 637 E. Michigan, 372-7120 steaks and pizza
- MF Eagle, 300 S. Capitol, 489-2578
- M Emil's, 2012 E. Michigan, 374-0328 Italian, special Nites
- ME Hoffman House, 7711 W. Saginaw, 627-2101
- ME Houlihan's Old Place, Lansing Mall 323-3550
- M House of Ing, 4113 S. Cedar, 393-4848 Chinese and American, cocktails
- MF Jim's Tiffany Place, 116 E. Michigan 372-4300, Greek Steak
- E The Knight Cap, 320 E. Michigan Ave., 484-7676, steaks and cocktails
- E Long's, 6810 S. Cedar, 694-8144, fine dining
- ME Mountain Jack's, 5800 W. Saginaw, 321-2770, steak, seafood, lunch and dinner
- M Scofa's, 2609 S. Cedar, 393-4160 assorted menu, closed Sunday's

I (Inexpensive) F (Family)

M (Moderate) E (Expensive)

MSU CAMPUS DINING FACILITIES

- M Crossroads Cafeteria, located in the Center for International Programs, breakfast and lunch
- M Kellogg Center, State Room and cafeteria
- M Owen Graduate Center, cafeteria services for all meals
- M Union Cafeteria, located in the student Union, on Abbott Rd., lunch only

FRANDOR SHOPPING CENTER AREA

- M Apple Jade, 503 Frandor, 332-8010, Chinese and American
- MF Bill Knapp's, 3139 E. Gd. River, 337-9755
- M Elias Brother's Big Boy, 3425 E. Saginaw, 332-0815
- MF Ground Round, 3224 E. Saginaw, 351-8083
- MF Gum Ball Express, 600 Frandor, 351-5152, family specials, bus lunch-ice cream
- M Loading Dock Bar and Restaurant, 337-8312
- MF Red Lobster, 3130 E. Saginaw, 351-0610
- MF Sneaker's, 600 N. Homer, 337-9201
- MF Yat Wah, 301 N. Clippert, across from Frandor, Chinese Restaurant and take-out, 351-2217

MSA 1984 FALL CONFERENCE EVALUATION

In order to assest in the planning of future meetings, we are requesting that you complete the following questionnaire and place it in the drop-off box near the cash-bar at the end of the day.

1. Please check which sessions you attended:

- Nuclear War
- Applied Sociology I
- How to Make a State Association Count
- Keynote address
- Basic Sociology Teaching Approaches
- Sociology of Food and Nutrition
- Potpourri
- Women's Circle
- Computers and the Classroom
- Applied Sociology II

2. Of the sessions you attended, which one(s) did you find worthwhile? Please specify reasons why.

3. What theme/topics would you suggest for inclusion in next year's MSA meetings?

4. In what ways would you be willing to participate in future MSA meetings?

- Chair a session, roundtable or panel
- Present a paper
- Attendance
- Assist in the organization of the meetings
- Host the MSA Conference
- Other (please specify) \_\_\_\_\_

5. Would you recommend other Sociologists/Graduate Students who may be interested in any of the following?

Chair a session, roundtable or panel \_\_\_\_\_

Present a paper \_\_\_\_\_

Attendance \_\_\_\_\_

Assist in the organization of the meetings \_\_\_\_\_

Other (please specify) \_\_\_\_\_

6. Comments/Suggestions